

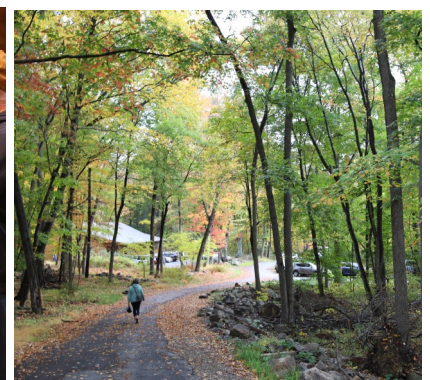
TROUT IN THE CLASSROOM



Happy birthday to the baby trout!

Thank you for attending the Fall Teacher Conference!

It was great to see so many of you at the TIC Fall Teacher Conference on October 8! More than 140 educators and partners joined us at Sharpe Reservation this year. Thank you to all our wonderful TIC teachers, administrators, partners, facilitators, and staff! We're excited to hear how your trout do this school year! For any questions, comments, or troubleshooting, please [contact me](#).



Fall Tank Maintenance Tips

- ◆ Clean the nest basket by scraping the surfaces with a clean sponge. The debris will go through the filter.
- ◆ Boost your tank's nitrifying bacteria with Special Blend initially, and switch to using only Nite-Out II when you begin to see nitrate and nitrite levels rising.
- ◆ Once you release your fish from the nesting basket, remember to cover your filter intake with mesh to prevent fish from getting trapped in the filter.
- ◆ Dead eggs (white and/or opaque) need to be removed immediately to reduce the risk of spreading fungus to the others.

Fall Trout Care Tips

- ◆ Most trout will hatch within 2-3 days of the first egg hatching. Remove and discard unhatched or discolored eggs.
- ◆ Alevin have a large yolk and no fins so they stay near the bottom and don't move much. Don't worry!
- ◆ Do not start feeding too early! Only feed a small amount of size 0 food to the trout when their yolk sac is completely gone, and they are swimming well.
- ◆ Once fry have been eating well, lower the netting around the basket to allow a space for adventurous fish to swim out. Some fish will remain in the nest for a few more days. They may need extra time in the basket to learn to feed!



New York State Trout in the Classroom Manual



Refer to the [Trout in the Classroom New York State Manual](#) for important tips and reminders! Find tank setup, feeding guidelines, trout care, and trout release information. Please let me know if any information is missing so that we can improve future versions. Join the [National TIC Google Group](#), a community of teachers, partners, and science experts, to access additional troubleshooting advice and resources.

Trout in the Classroom Curriculum

Explore our online education module with complementary lessons and resources to help you integrate TIC into your classroom! Lessons include suggested grade bands (ES, MS, HS), vocabulary terms, presentations and activity materials. You can find the TIC education module on [DEP's website](#); we will continue to add more lessons over time, so make sure to check back regularly. For additional lessons, please check out [Trout Unlimited's website](#).



Do you still need trout eggs?

Cold Spring Harbor Fish Hatchery will be visiting the Visitor Center at Newtown Creek in Brooklyn on **Friday, November 7**. To coordinate egg pickup, please [contact me](#). Eggs can also be picked up from [DEC's Catskill Hatchery](#) or other DEC hatcheries until late October and directly from [Cold Spring Harbor Fish Hatchery](#) starting the last week in October through early November.